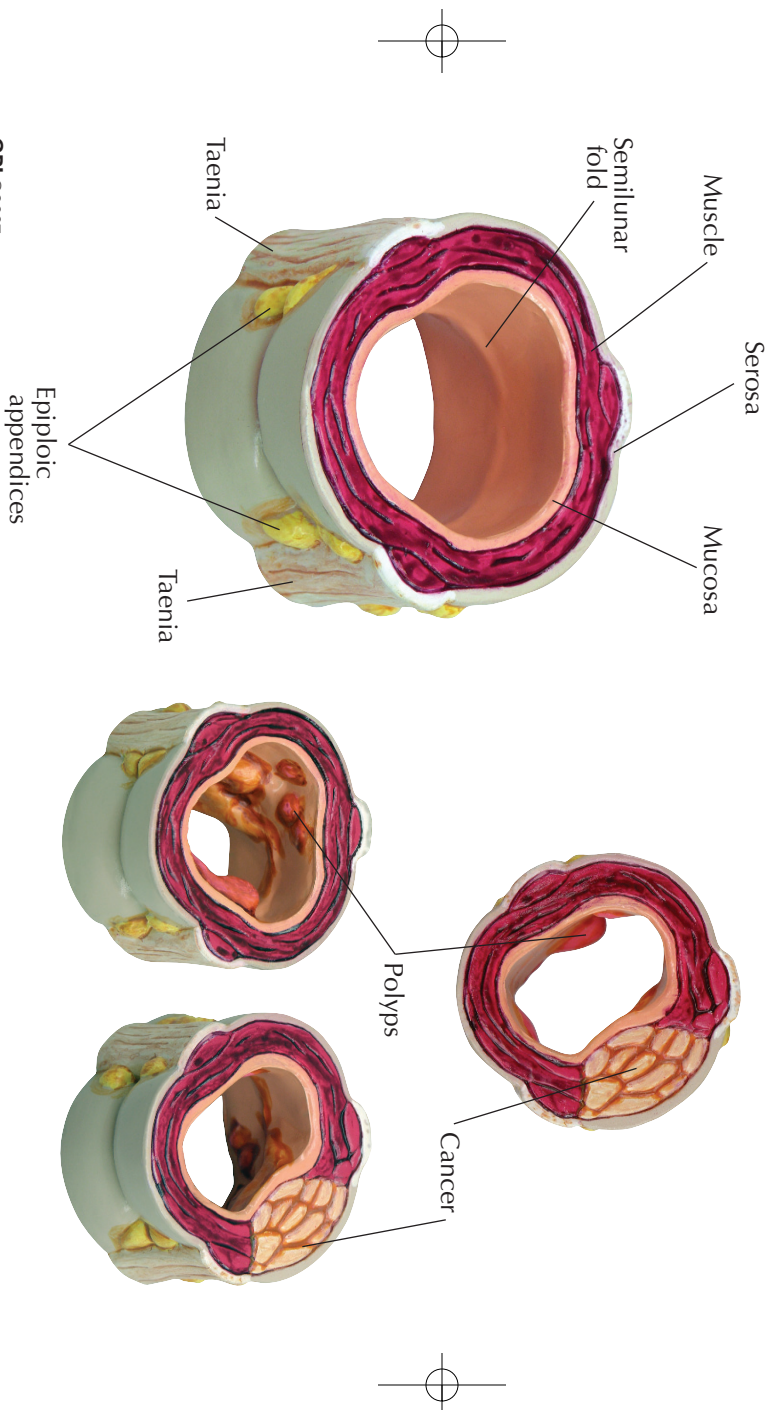


# 4-PIECE COLON PATHOLOGIES

## Normal colon section

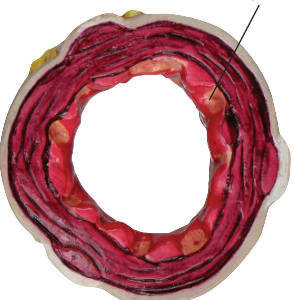
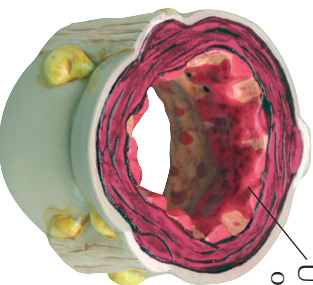


# 4-PIECE COLON PATHOLOGIES

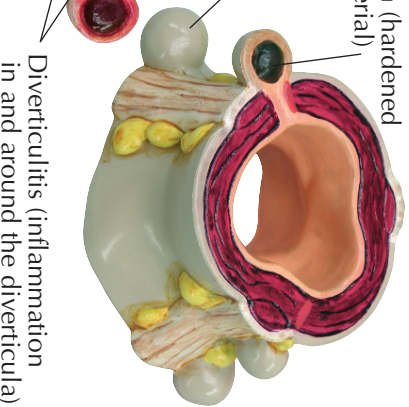
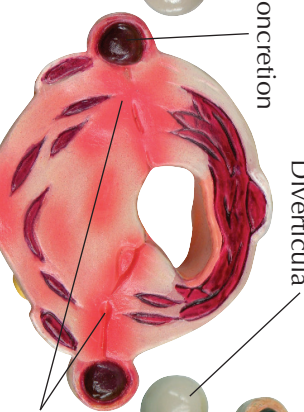
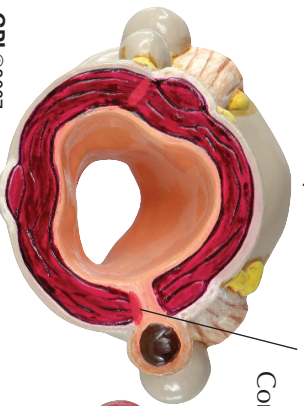
**Early colitis**  
(inflammation of the colon)



**Chronic colitis**



**Diverticulosis** occurs from herniation of the mucosa usually at the site where the blood vessels pierce the muscular wall



GPI ©2007